

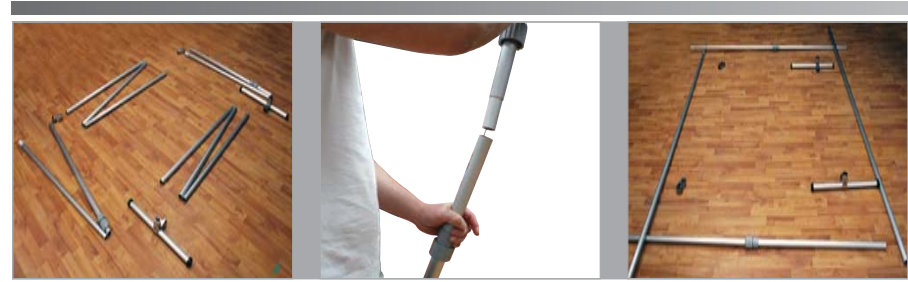


[TECH TEN]

PACKAGE INCLUDE

1. Telescopic side poles
2. L-Wrench
3. bottom Pole
4. Top Pole
5. Feet
6. Top Pole Connector
7. Carrying Bag

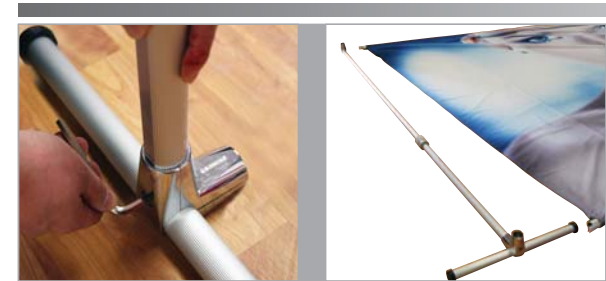
TECH TEN HOW TO



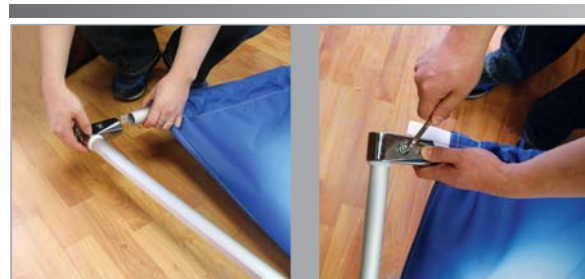
1. Insert all the shock corded poles and lay down on the floor.



2. Slide the top & bottom poles into the pockets.



3. Use L-Wrench to connect telescopic poles to the feet.



4. Connect the top & bottom poles to telescopic side poles.



5. Hold center of the top pole and lift up from the ground.



6. Adjust each of the telescopic side poles to the required height.